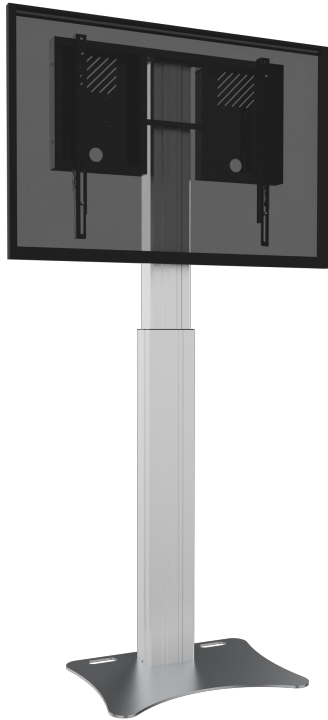


RLI12090PK

SPECIFICATION SHEET
WWW.CONEN-SYSTEMS.COM

HEIGHT ADJUSTABLE DISPLAY AND MONITOR STAND, LITE SERIES WITH 90 CM OF VERTICAL TRAVEL

COLUMN SILVER, ANTI-COLLISION, HIGH MODEL, FLOOR PLATE



PRODUCT

Height adjustable display and monitor stand for 55"-86" (interactive) touch screen monitors.

The RLI12090PK monitor stand is designed for touch screen monitors up to 86". The units feature a sturdy monitor mount with integrated cable management and "pull & release" locking brackets for quick and easy mounting of the monitor.

The RLI12090PK monitor stand comes with a slim column that offers unique 90 cm of vertical travel.

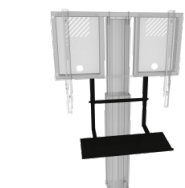
A 0.3" thick, solid steel plate secures to the motorized center column. Designed to add stability to wall mount systems, secured to e.g. a stud wall. The floor plate features cut-outs/ handles for easy transportation. It comes powder coated in grey aluminum.

The unit comes flat-packed in 3 cartons and is courier-shippable.

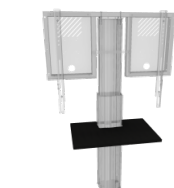
FEATURES

- Heavy duty mount for touch screen monitors up to 86"
- "Pull & release" brackets for easy mounting of the monitor
- VESA pattern, max. 800 x 600
- Integrated cable management
- 90 cm of smooth motorized height adjustment, actuator 1500N, 47 mm/ 1.85" per second
- Floor plate and 2 wall mounting brackets for optimum stability
- With anti-collision function
- Quick and easy mounting to the wall
- Wired remote control included

Accessories



Keyboard shelf for LITE series



Front shelf for LIGHT system



Laptop side shelf



Universal PC bracket



Soundbar bracket



Display mount



Wall mounted



Motorized height adjustable



Single display



5 years warranty



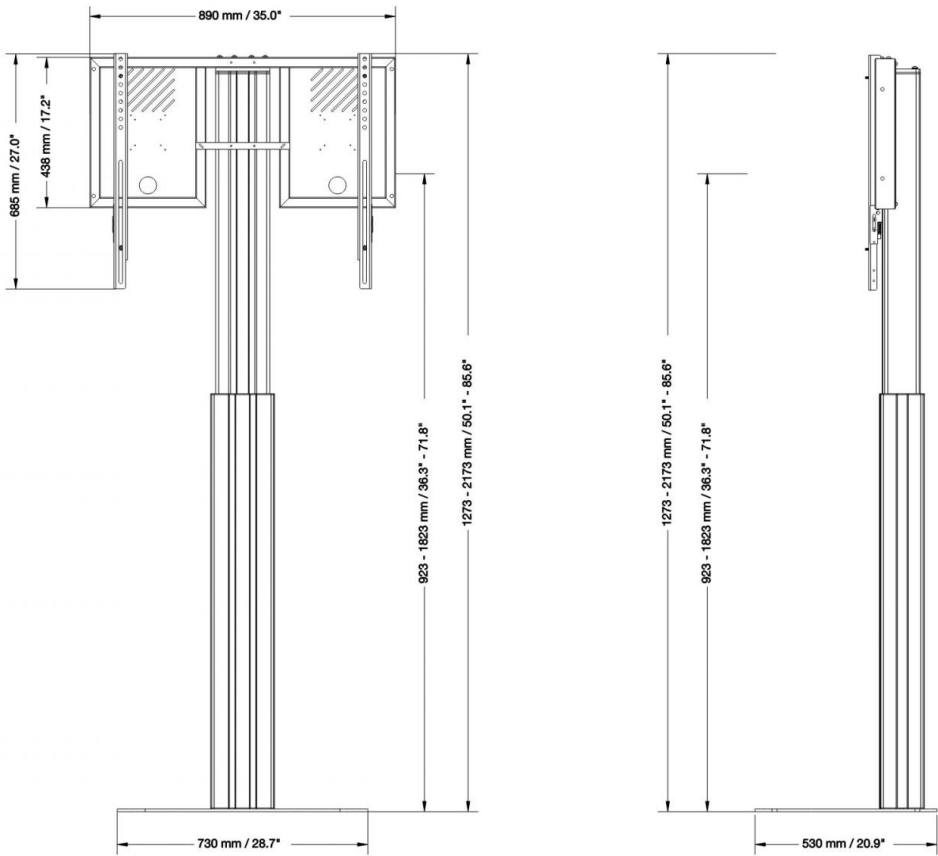
Max. load
136 kg / 299.8 lbs



Max. Vesa
800 x 600

Item number	RLI12090PK	
Vesa horizontal / Vesa vertical	300 mm - 800 mm / 200 mm - 600 mm	
Frame for all	55" - 86"	
Center to floor distance	923 mm - 1823 mm	36.3" - 71.8"
Load capacity	136 kg	299.8 lbs
Width / Height / Depth	890 mm / 1273 mm - 2173 mm / 530 mm	35" / 50.1" - 85.6" / 20.9"
Warranty	5 years limited warranty	
Frame color	RAL 9005 deep black	
Column color	Silver anodized	
Base color	RAL 9006 white aluminum	
Packages	Package dimensions WxHxD	Package weight
AFSCETARLI	930 x 70 x 540 mm / 36.6 x 2.8 x 21.3"	14 kg / 30.9 lbs
CCEL12090WK	1390 x 195 x 245 mm / 54.7 x 7.7 x 9.6"	27,6 kg / 60.8 lbs
PSTSCETALI	760 x 30 x 570 mm / 29.9 x 1.2 x 22.4"	21,8 kg / 48.1 lbs
Total weight	63,4 kg / 139.8 lbs	

Dimensions



Conen Systems GmbH
Conenstr. 4
54497 Morbach-Gonzerath
Germany

T +49 5251 50012-0
E sales@conen-systems.com

www.conen-systems.com

© Copyright by Conen Systems GmbH