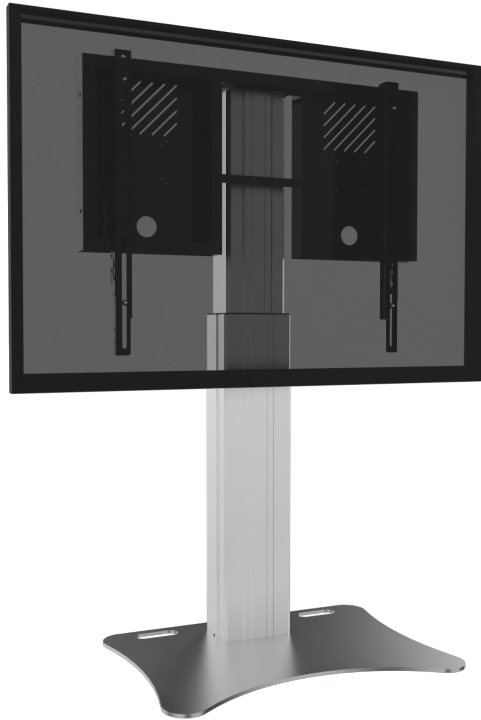


RLI8050PK

SPECIFICATION SHEET
WWW.CONEN-SYSTEMS.COM

HEIGHT ADJUSTABLE DISPLAY AND MONITOR STAND, LITE SERIES WITH 50 CM OF VERTICAL TRAVEL

COLUMN SILVER, ANTI-COLLISION, LOW MODEL, FLOOR PLATE



PRODUCT

Height adjustable display & monitor stand for 42"-75" (interactive) touch screen monitors.

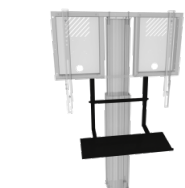
The RLI8050PK adjustable monitor stand is designed for touch screen monitors up to 75". The units feature a sturdy monitor mount with integrated cable management and "pull & release" locking brackets for quick and easy mounting of the monitor.

The RLI8050PK monitor stand comes with a slim column that offers 50 cm of vertical travel.

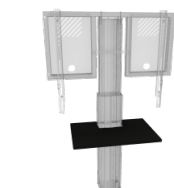
A 0.3" thick, solid steel plate secures to the motorized center column. Designed for static, freestanding applications or to add stability to wall mount systems, secured to e.g. a stud wall. The floor plate features cut-outs/ handles for easy transportation. It comes powder coated in grey aluminum.

The unit comes flat-packed in 3 cartons and is courier-shippable.

Accessories



Keyboard shelf for LITE series



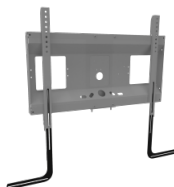
Front shelf for LIGHT system



Laptop side shelf



Universal PC bracket



Soundbar bracket

FEATURES

- Heavy duty mount for touch screen monitors up to 75"
- "Pull & release" brackets for easy mounting of the monitor
- VESA pattern, max. 800 x 600
- Integrated cable management
- 50 cm of smooth motorized height adjustment, actuator 1500N, 47 mm/ 1.85" per second
- Floor plate and 2 wall mounting brackets for extra stability
- With anti-collision function
- Quick and easy mounting to the wall
- Wired remote control included



Display mount



Wall mounted



Motorized height adjustable



Single display



5 years warranty



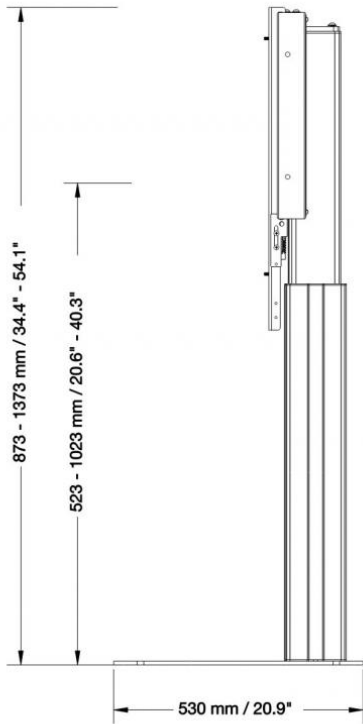
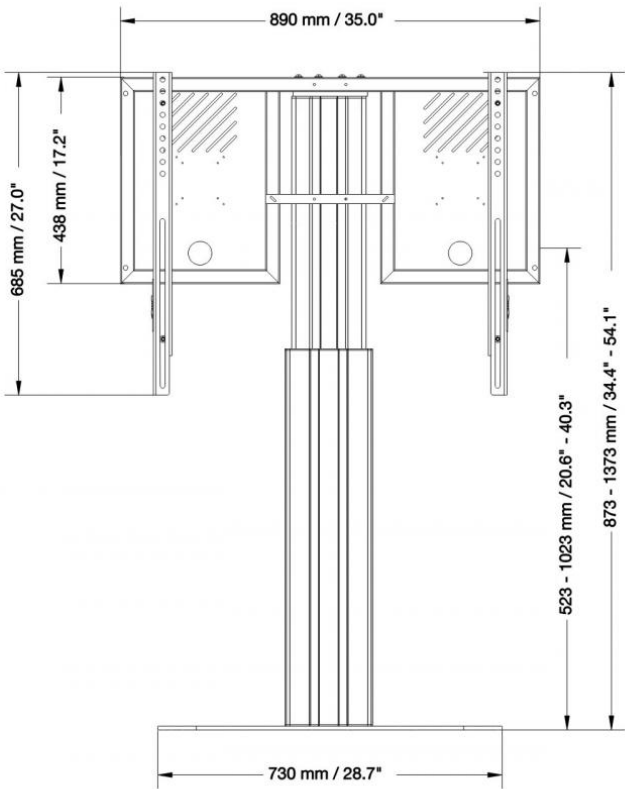
Max. load
136 kg / 299.8 lbs



Max. Vesa
800 x 600

Item number	RLI8050PK	
Vesa horizontal / Vesa vertical	300 mm - 800 mm / 200 mm - 600 mm	
Frame for all	55" - 75"	
Center to floor distance	523 mm - 1023 mm	20.6" - 40.3"
Load capacity	136 kg	299.8 lbs
Width / Height / Depth	890 mm / 873 mm - 1373 mm / 166 mm	35" / 34.4" - 54.1" / 6.5"
Warranty	5 years limited warranty	
Frame color	RAL 9005 deep black	
Column color	Silver anodized	
Base color	RAL 9006 white aluminum	
Packages	Package dimensions WxHxD	Package weight
AFSCETARLI	930 x 70 x 540 mm / 36.6 x 2.8 x 21.3"	14 kg / 30.9 lbs
CCEL8050WK	1005 x 245 x 195 mm / 39.6 x 9.6 x 7.7"	19 kg / 41.9 lbs
PSTSCETALI	760 x 30 x 570 mm / 29.9 x 1.2 x 22.4"	21,8 kg / 48.1 lbs
Total weight	54,8 kg / 120.9 lbs	

Dimensions



Conen Systems GmbH
 Conenstr. 4
 54497 Morbach-Gonzerath
 Germany

T +49 5251 50012-0
 E sales@conen-systems.com

www.conen-systems.com

© Copyright by Conen Systems GmbH